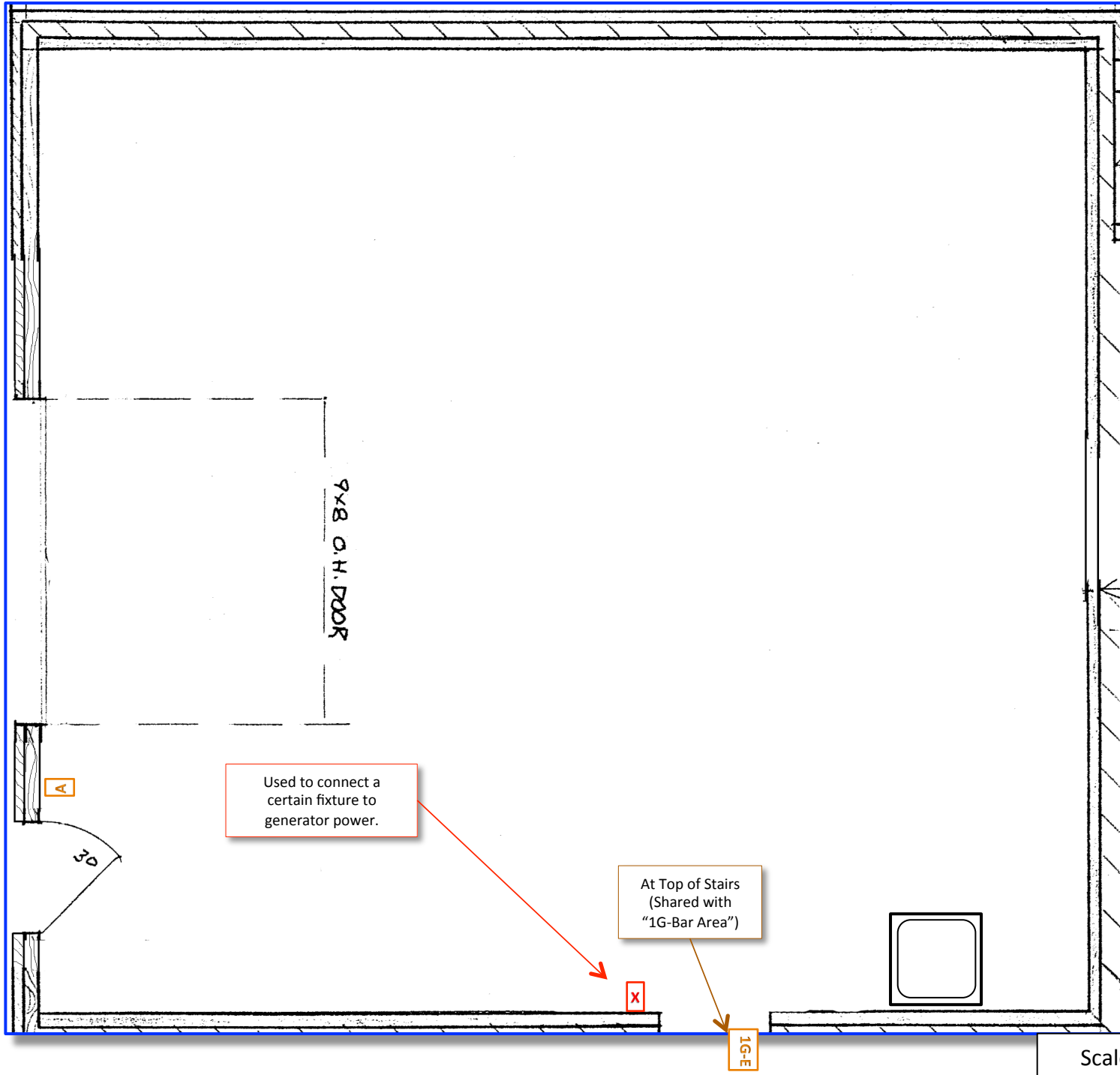


Floor Plan

Scale: 4' per inch

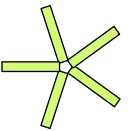
- X = Switch Cluster
- X = Emergency Xfer Switch

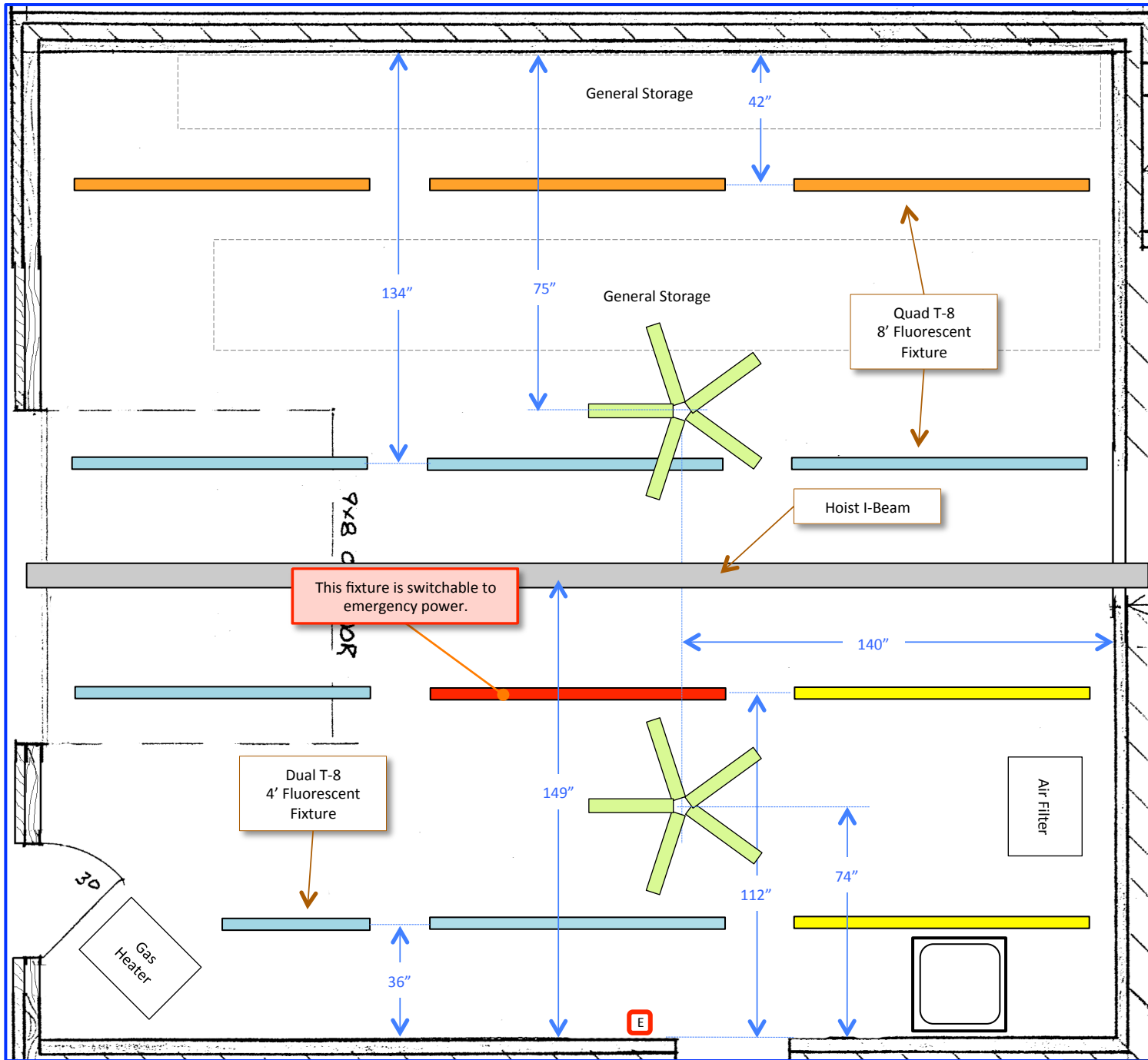


Keypad Location 1K-A  
Shop, Near Service Door



Cables  
1 – Blue

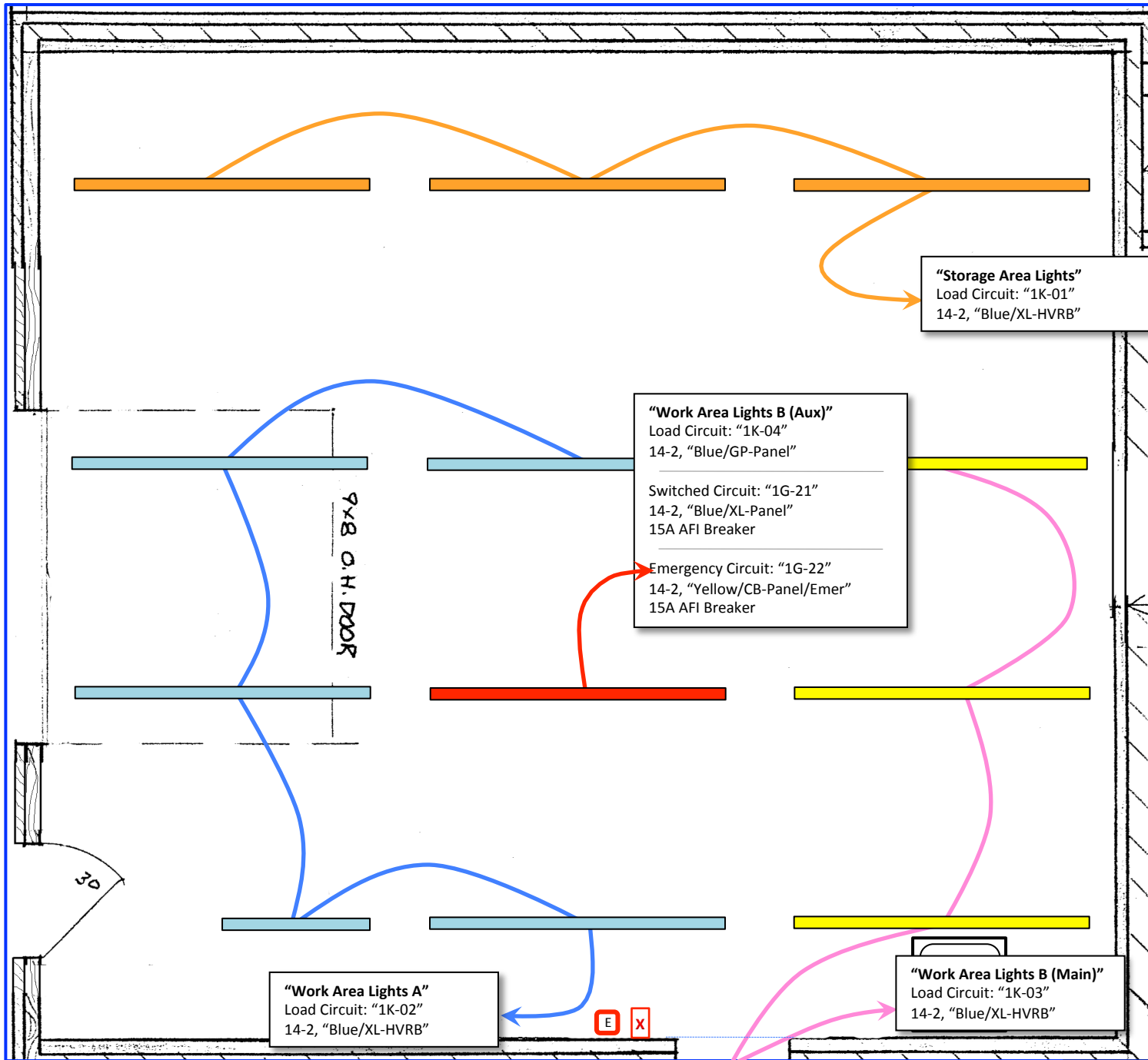
- E = Emergency Light
- = Fluorescent Fixture
- = Fluorescent Fixture
- = Fluorescent Fixture
- = Fluorescent Fixture
-  60" Ceiling Fan



Lighting

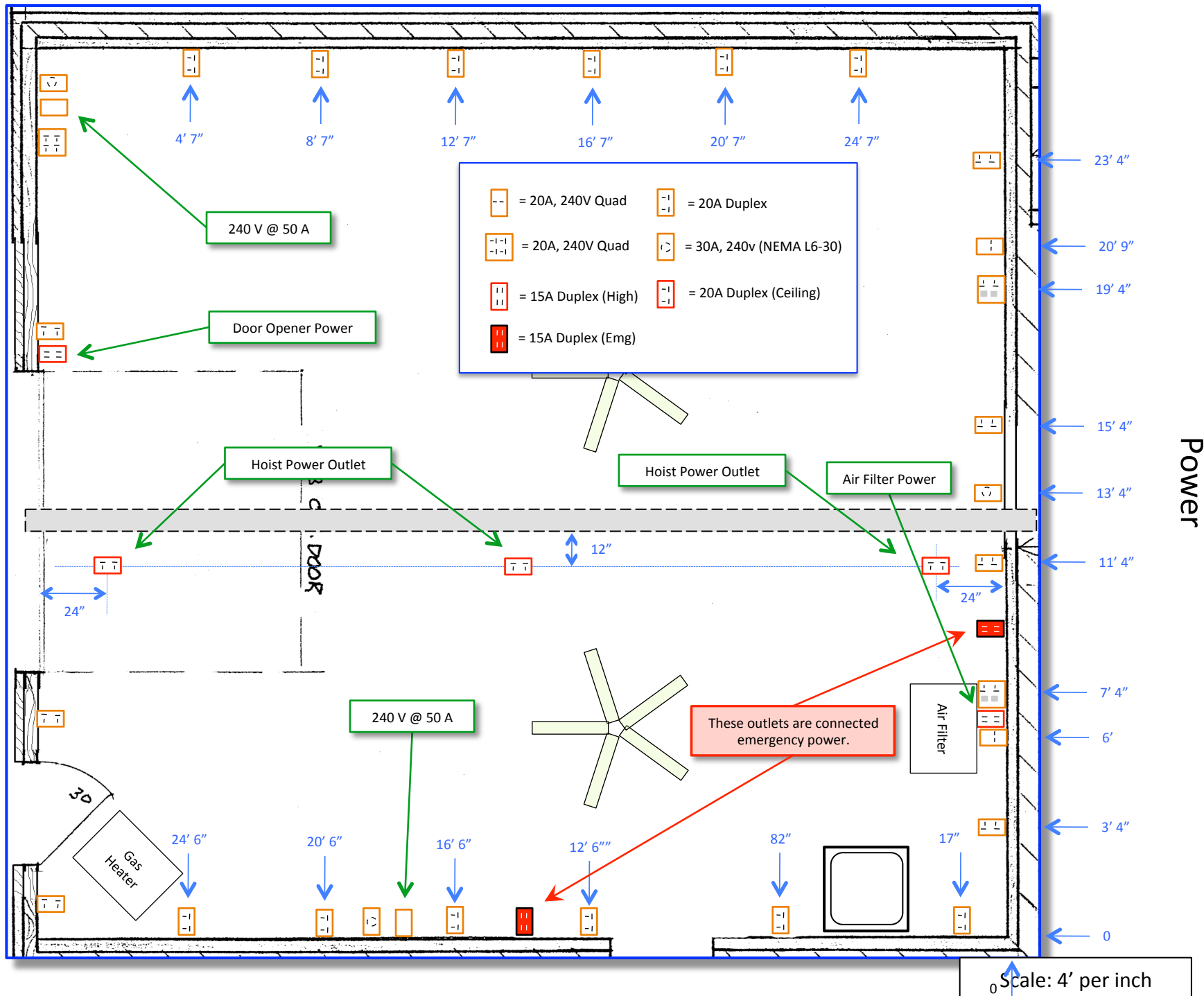
Scale: 4' per inch

- E = Standby Light
- X = Emergency Xfer Switch
- = Fluorescent Fixture
- 
- 
- 



Lighting Wiring

Scale: 4' per inch



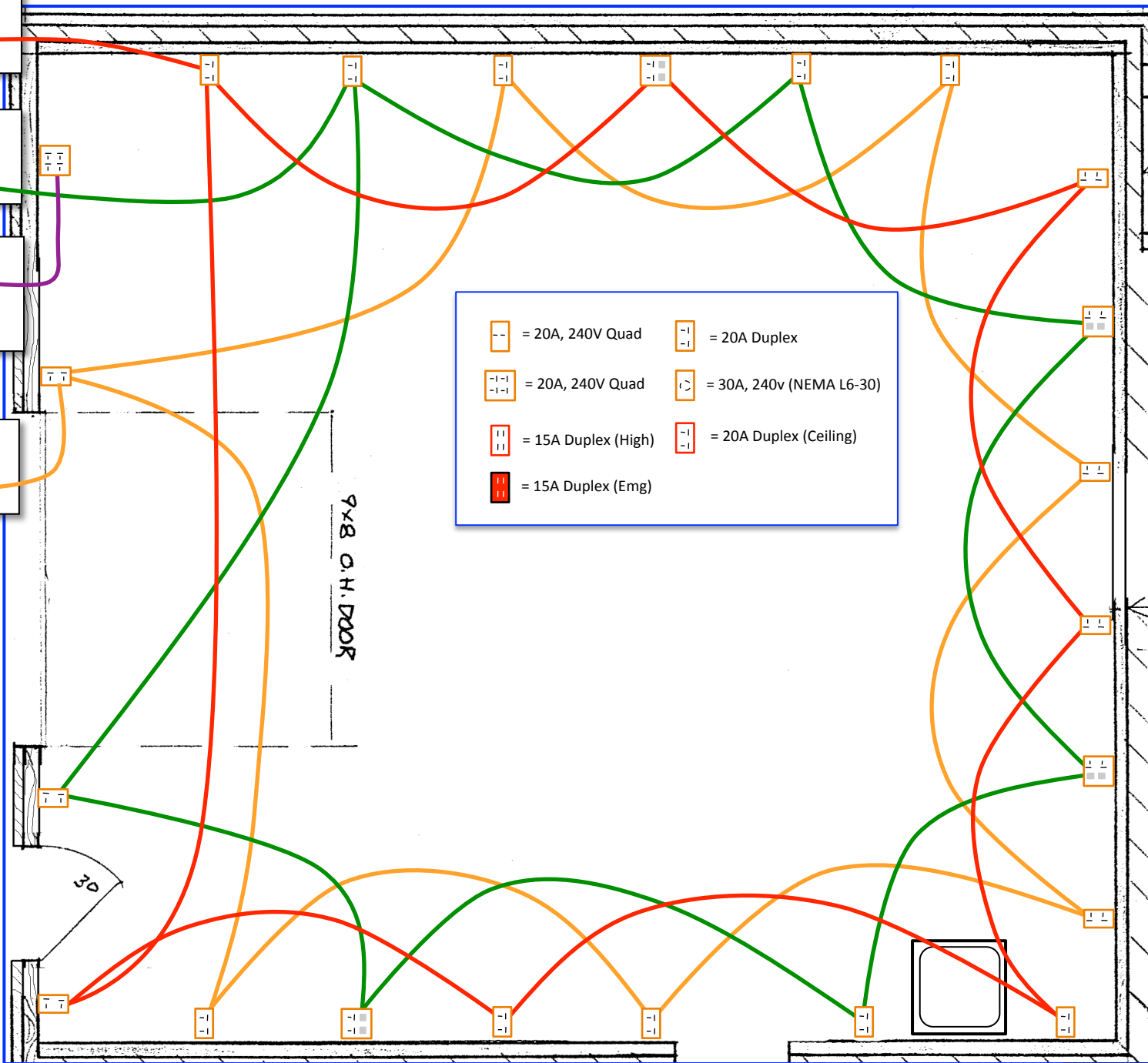
Power

**"120V Outlets A"**  
 Circuit: "1K-06"  
 12-2, "Brown/CB-Panel"  
 GFI 20A Breaker

**"120 Volt Outlets B"**  
 Circuit: "1K-07"  
 12-2, "Brown/CB-Panel"  
 GFI 20A Breaker

**"120 Volt Outlets, Breaker Panel"**  
 Circuit: "1K-08"  
 12-2, "Brown/CB-Panel"  
 GFI 20A Breaker

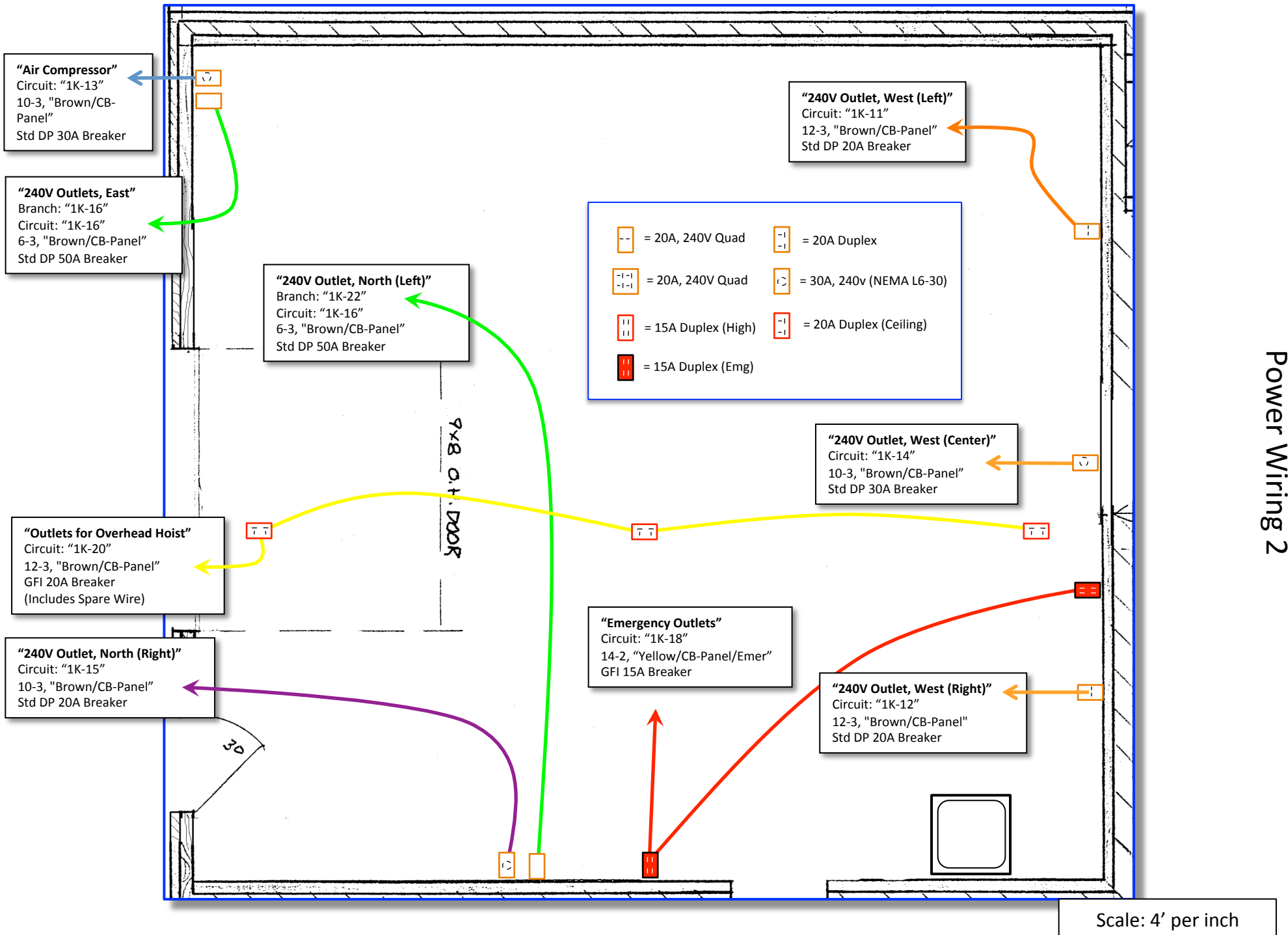
**"120 Volt Outlets C"**  
 Circuit: "1K-09"  
 12-2, "Brown/CB-Panel"  
 GFI 20A Breaker



- |  |                     |  |                          |
|--|---------------------|--|--------------------------|
|  | = 20A, 240V Quad    |  | = 20A Duplex             |
|  | = 20A, 240V Quad    |  | = 30A, 240v (NEMA L6-30) |
|  | = 15A Duplex (High) |  | = 20A Duplex (Ceiling)   |
|  | = 15A Duplex (Emg)  |  |                          |

Power Wiring 1

Scale: 4' per inch



Power Wiring 2

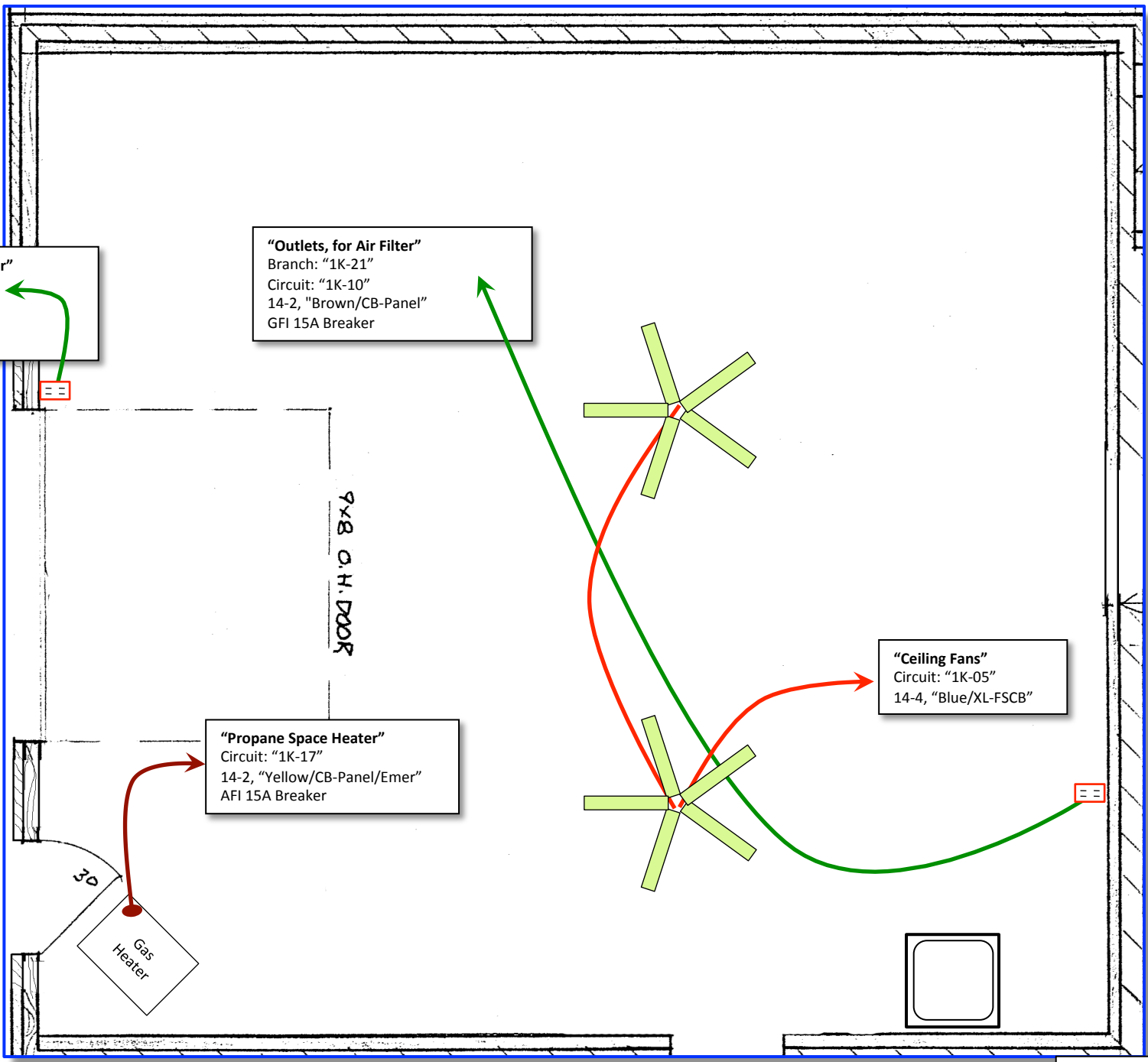


**"Outlets for Door Opener"**  
 Branch: "1K-10"  
 Circuit: "1K-10"  
 14-2, "Brown/CB-Panel"  
 GFI 15A Breaker

**"Outlets, for Air Filter"**  
 Branch: "1K-21"  
 Circuit: "1K-10"  
 14-2, "Brown/CB-Panel"  
 GFI 15A Breaker

**"Ceiling Fans"**  
 Circuit: "1K-05"  
 14-4, "Blue/XL-FSCB"

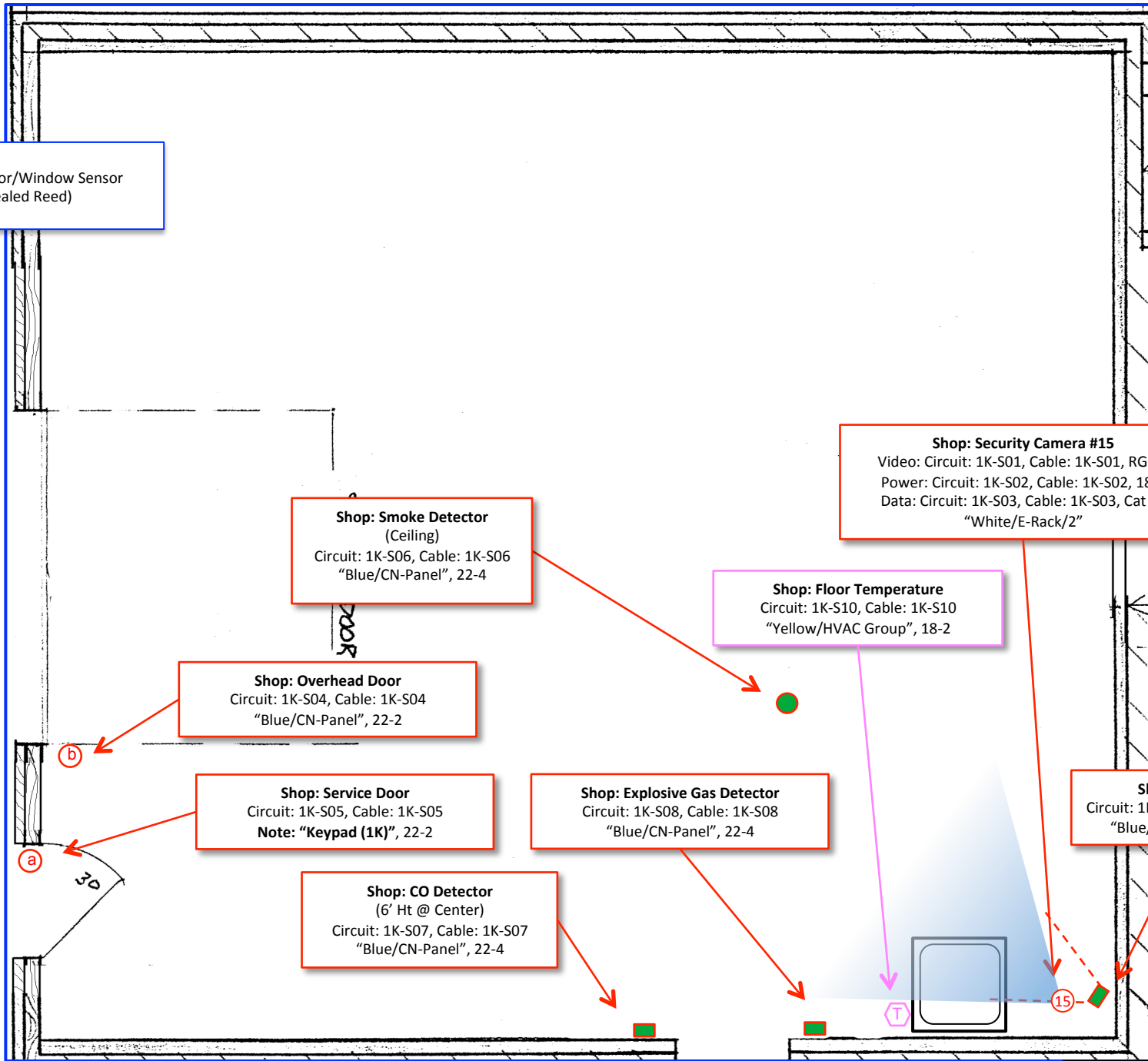
**"Propane Space Heater"**  
 Circuit: "1K-17"  
 14-2, "Yellow/CB-Panel/Emer"  
 AFI 15A Breaker



HVAC Power

Scale: 4' per inch

(x) = NC Door/Window Sensor  
(Concealed Reed)



**Shop: Smoke Detector**  
(Ceiling)  
Circuit: 1K-S06, Cable: 1K-S06  
"Blue/CN-Panel", 22-4

**Shop: Security Camera #15**  
Video: Circuit: 1K-S01, Cable: 1K-S01, RG-59  
Power: Circuit: 1K-S02, Cable: 1K-S02, 18-2  
Data: Circuit: 1K-S03, Cable: 1K-S03, Cat 5e  
"White/E-Rack/2"

**Shop: Floor Temperature**  
Circuit: 1K-S10, Cable: 1K-S10  
"Yellow/HVAC Group", 18-2

**Shop: Overhead Door**  
Circuit: 1K-S04, Cable: 1K-S04  
"Blue/CN-Panel", 22-2

**Shop: Service Door**  
Circuit: 1K-S05, Cable: 1K-S05  
**Note: "Keypad (1K)", 22-2**

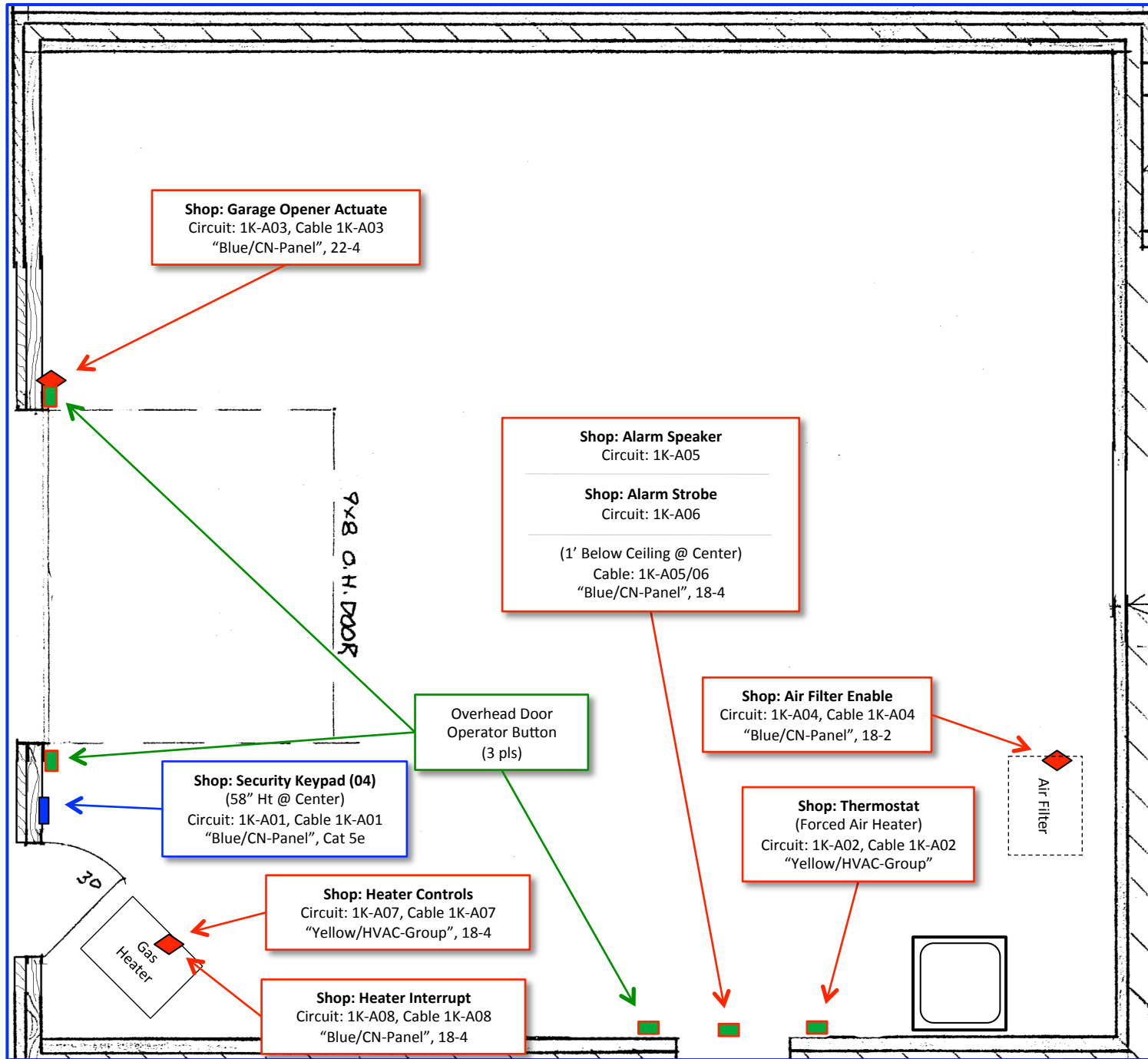
**Shop: Explosive Gas Detector**  
Circuit: 1K-S08, Cable: 1K-S08  
"Blue/CN-Panel", 22-4

**Shop: Motion**  
Circuit: 1K-S09, Cable: 1K-S09  
"Blue/CN-Panel", 22-4

**Shop: CO Detector**  
(6' Ht @ Center)  
Circuit: 1K-S07, Cable: 1K-S07  
"Blue/CN-Panel", 22-4

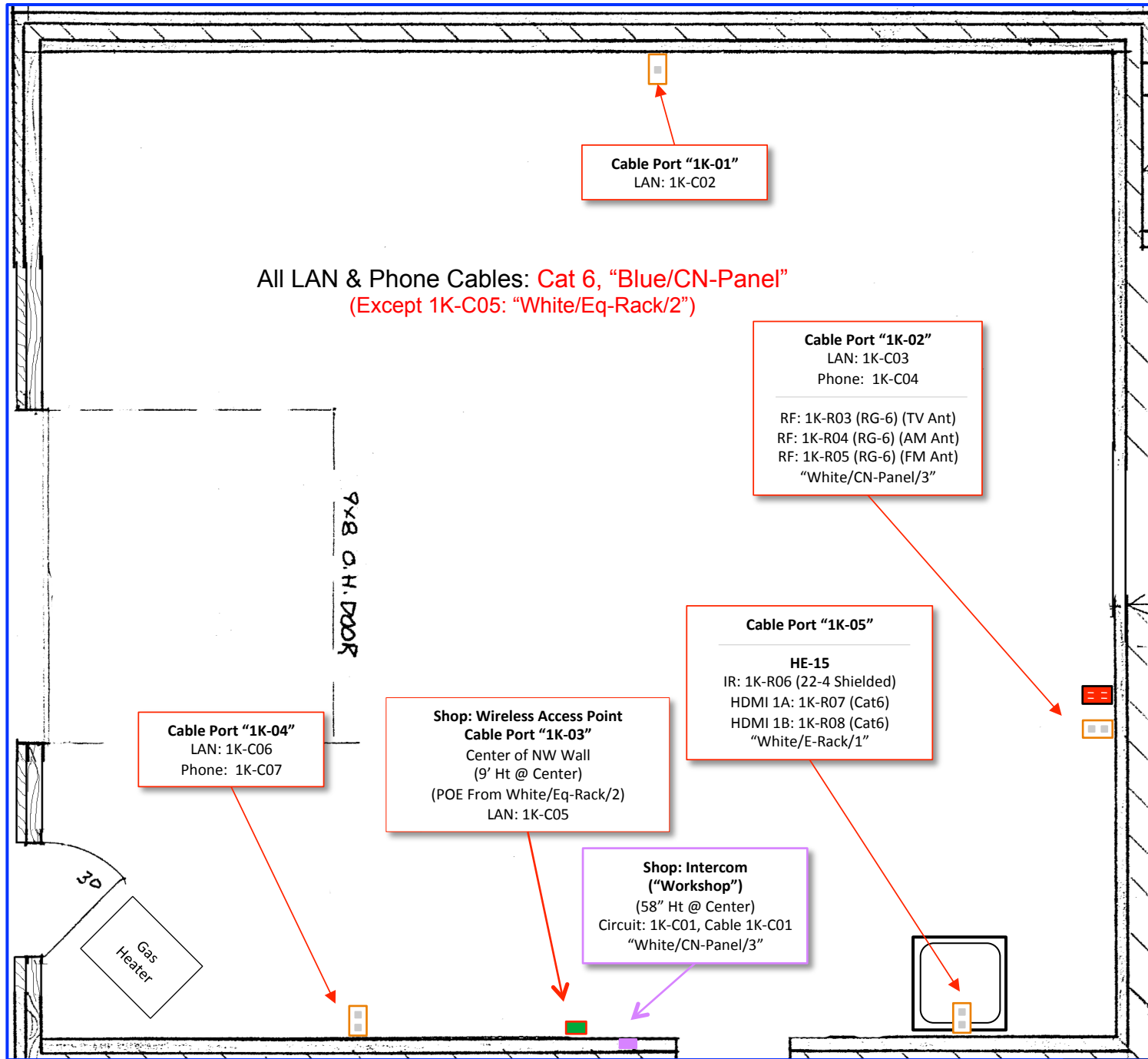
Scale: 4' per inch

Sensors



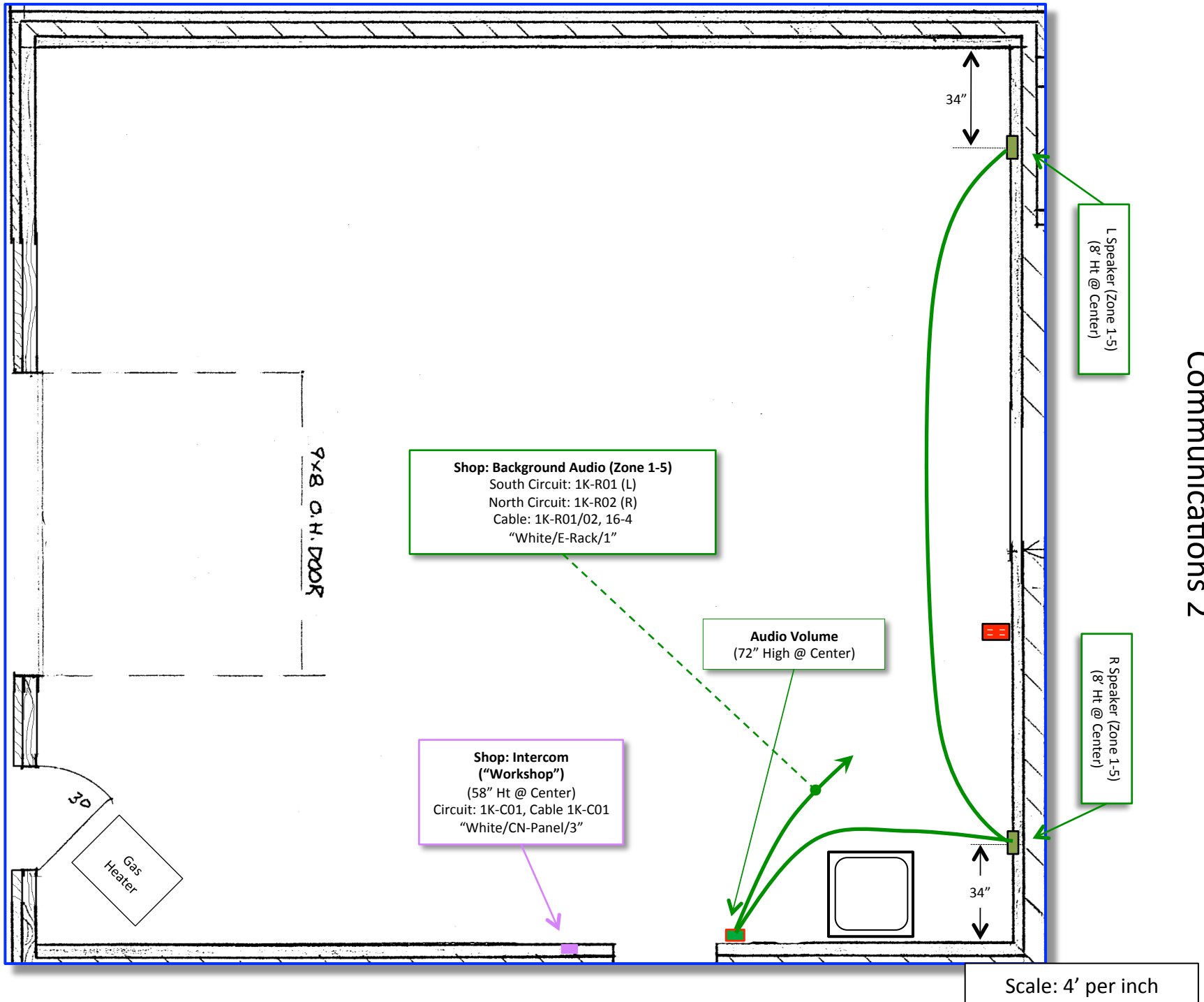
Automation Controls

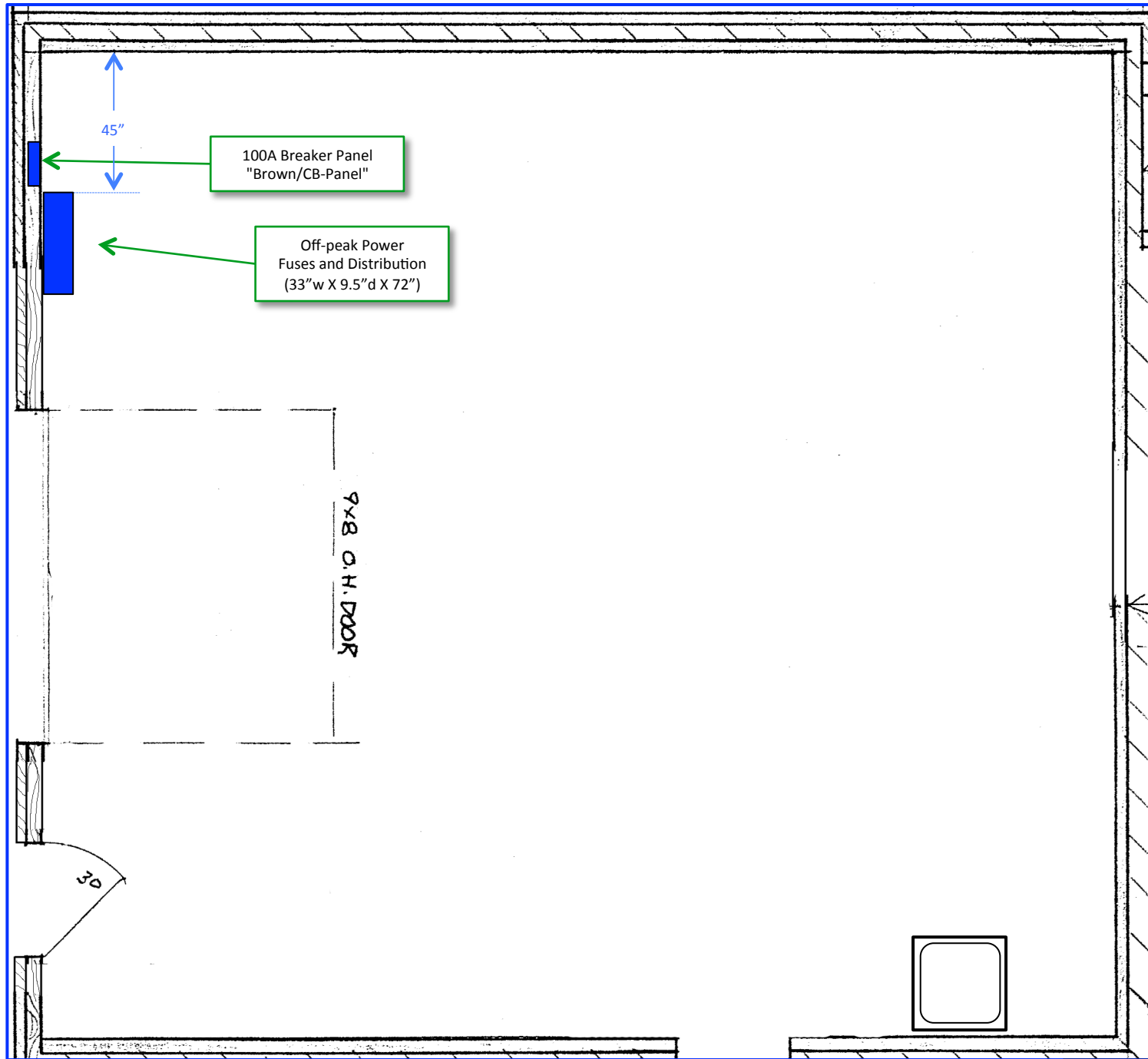
Scale: 4' per inch



Communications 1

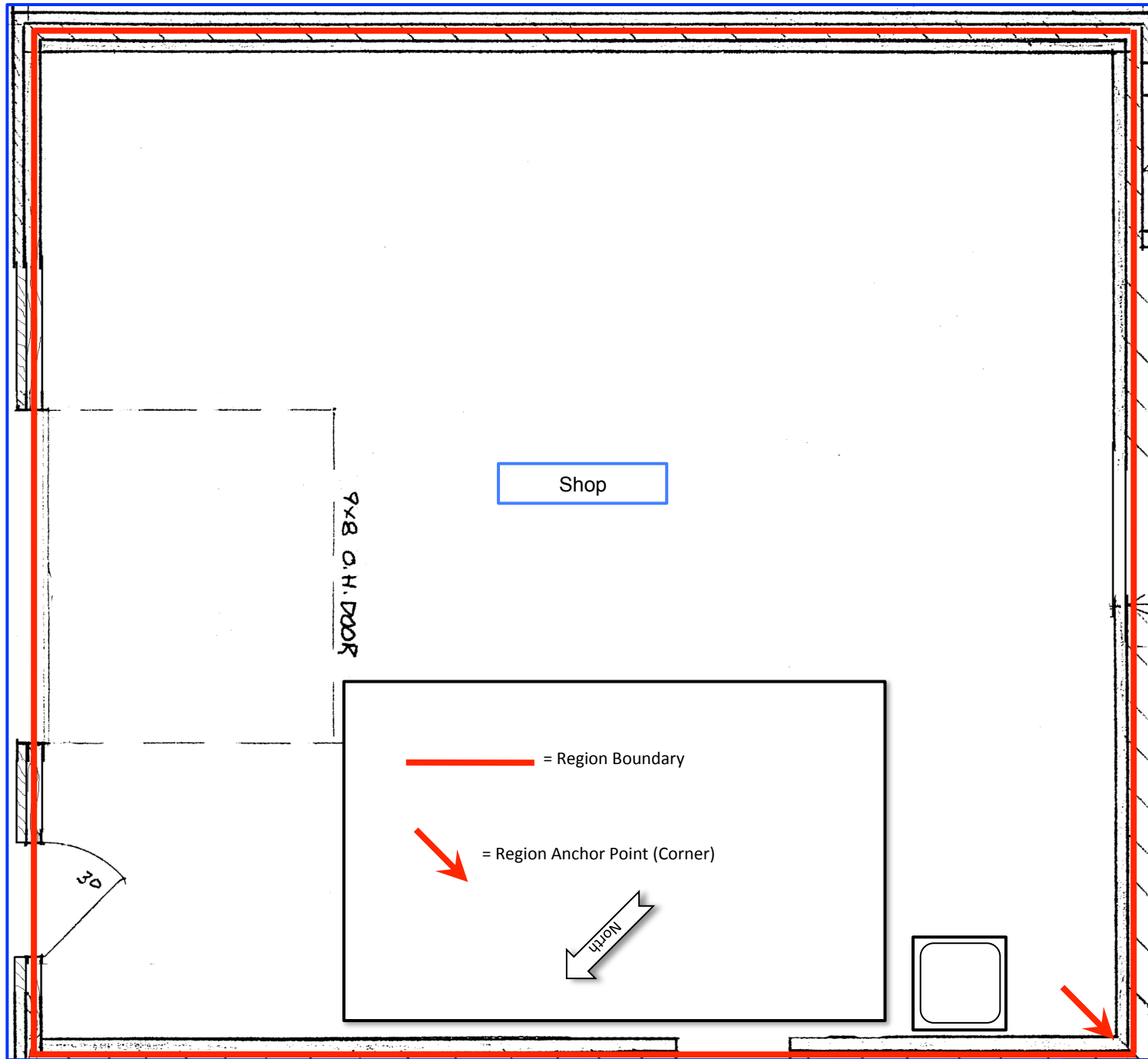
Scale: 4' per inch





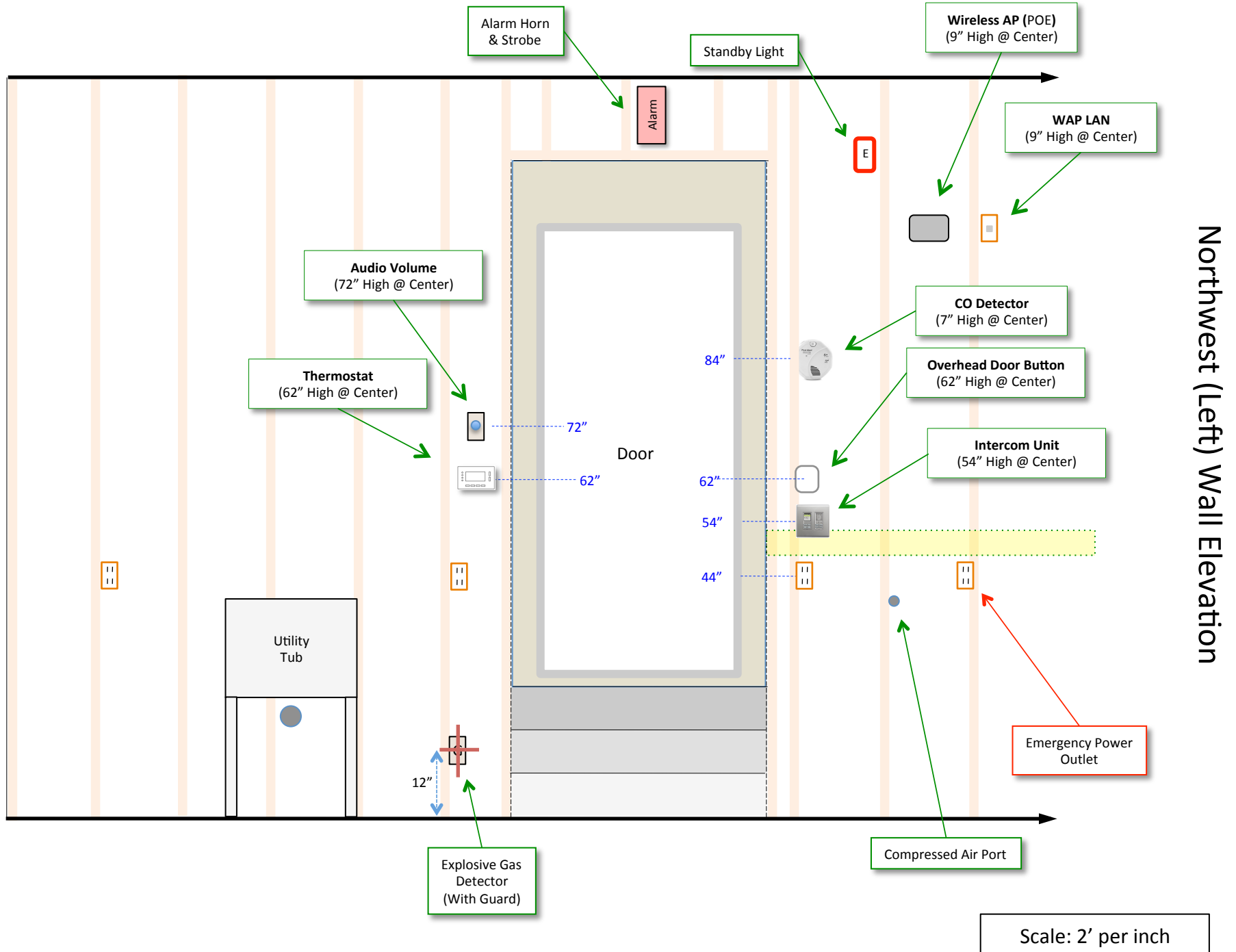
Electrical Cabinets

Scale: 4' per inch



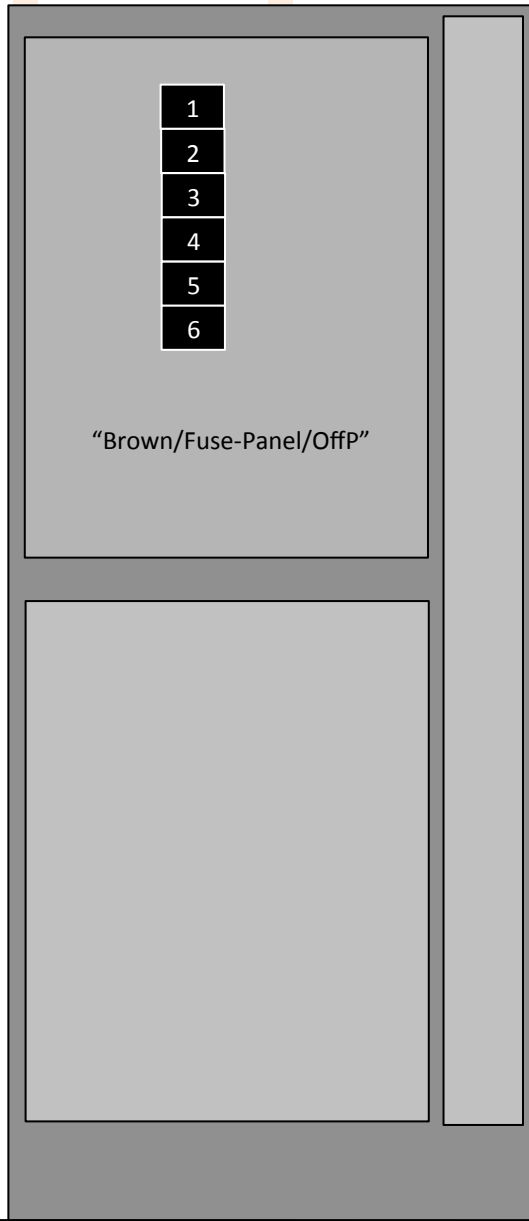
Region Overview

Scale: 4' per inch





Garage  
Door

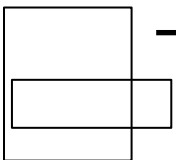


- 1
- 2
- 3
- 4
- 5
- 6

"Brown/Fuse-Panel/OffP"

"Brown/CB-Panel/Line"

Electrical Cabinet Elevation



Scale: 1' per inch